

EZ Reach™ Sponge Sampler

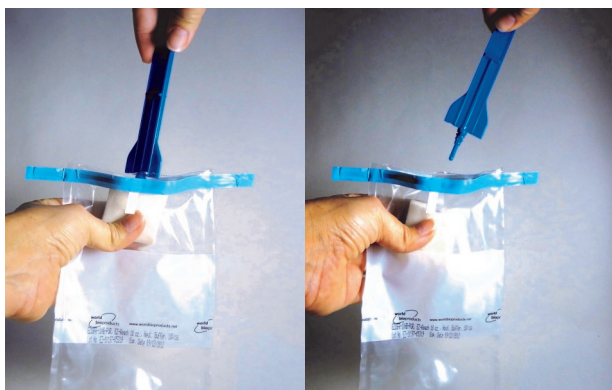
1. Open the sample bag by first tearing off the top plastic strip where indicated, and then use the white pull tabs to open the mouth of the bag.



3. Rub the sponge paddle vigorously over the surface area to be analyzed.



5. With your hands on the outside of the bag, pinch the sponge while turning the EZ Reach handle in a **counter-clockwise** direction one half turn, until it disengages. Discard handle.



2. Keeping your hands on the outside of the bag, push the EZ Reach handle out of the bag. Grasp the handle above the central crossing rib on the handle and remove sponge sampler from the bag.



4. After sampling is complete, insert the sponge portion into the original sample bag. Do not insert the handle beyond the central crossing rib, and do not touch the inside of bag with your hand.



6. Fold down the top of the bag several times and secure closure using the wire ties.

